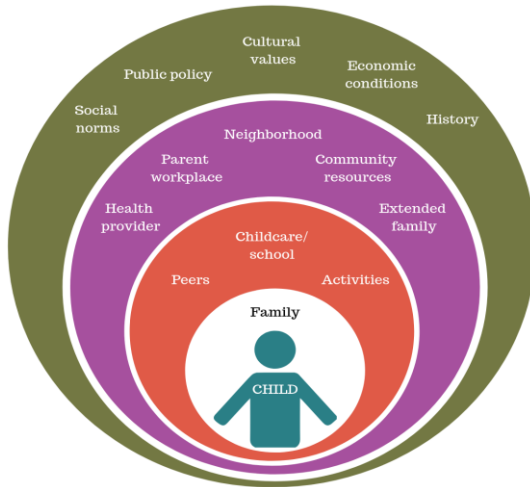




1

PREPARING CHILDREN FOR LIFELONG SUCCESS
Ecological Theory & The Social Determinants of Health



2

“The System isn’t broken they were designed to be this way”
Parent Quote - Family Story Project

EMPHASIS ON

- WHOLE CHILD
- WHOLE FAMILY
- WHOLE COMMUNITY
- INDIVIDUAL AND COLLECTIVE
- VOICE AND LEADERSHIP
- DATA AND CONTEXT
- EVERY INSTITUTION AND SYSTEM

EQUITY

**SOCIAL
DETERMINANTS
OF HEALTH**



Systems Change: Shifting Conditions That Keep Problems in Place (FSG 2018)

3

STRATEGIC PLAN STRATEGIES 2020-2025

RESILIENT FAMILIES

- Intensive Supports for Families with Multiple Risk Factors; Parent Connectivity; Family Engagement Capacity building.

HEALTHY CHILDREN

- Oral Health Access and Utilization; Integrated Systems for Children with Special Needs; Early Mental Health Systems Infrastructure Enhancements

QUALITY CARE AND EDUCATION

- Quality Improvement; Expanding Access to Early Learning Settings for Children with Special Needs

POLICY, ADVOCACY, EVALUATION, EMERGING AND COMMUNICATIONS

- Leadership on Early Childhood Advocacy & Policy Development
- Community Partnership
- Community Education
- Evaluation and Research
- Emerging Projects Innovation, New Opportunities, Seed Projects

4

Strategic Plan Implementation Plan (SPIP) Focus Area Budget for 2nd funding cycle FY2023-2025

SUMMARY	2 Year Total Allocation
RESILIENT FAMILIES	2,120,000
HEALTHY CHILDREN	2,120,000
QUALITY CARE AND EDUCATION	2,120,000
POLICY-ADVOCACY & COMMUNICATIONS	760,000
EVALUATION	226,000
OTHER ACTIVITIES	214,000
	\$7,560,000



Does not include leveraged, braided or other grants funding

5

TIMELINE 2023-2024

March-July 2023	<ul style="list-style-type: none"> • Contract Negotiations, Commission Agreement Approvals and Contract Executions for Services July 1st
Sept-Dec 2023	<ul style="list-style-type: none"> • Remaining FY23-25 Continuation Funding Approvals • Strategic Planning 2025: Prep • SPIP FY 23-25 Implementation- emergent strategies
2024	<ul style="list-style-type: none"> • Strategic Plan 2025-2030 Approved

6

SPIP 23-25 AGREEMENTS FOR APPROVAL TODAY AGENDA ITEMS #7 thru #10

FOCUS AREA	SUBSTRATEGY	AGENCY	PROGRAM
Quality Care & Education # 7	Quality Improvement & Expand Access to Early Learning Settings for Children with Special Needs	San Mateo County Office of Education	Early Childhood Quality and Inclusion Project
Resilient Families #8	Family Engagement Capacity Building	San Mateo County Office of Education	Family Engagement Systems Support
Resilient Families #9	Parent Connectivity	Puente de la Costa Sur	Suenos Unidos
Resilient Families #10	Intensive Supports for Families with Multiple Risk Factors	StarVista	Healthy Homes and Integrated Systems for Children with Special Needs

7



Questions/Comments

8

8



Early Quality + Inclusion Partnership



9



Strategic Plan Funding Priorities

- Quality Improvement**
 In partnership with existing community efforts, support formal quality improvement frameworks in early learning environments, and provide the services required to help providers and programs improve their quality as measured by these frameworks. Such services may include coaching/consultation, including reflective practice and consultation to support children with social-emotional needs or who are at risk for expulsion and/or reduced hours; peer mentoring; program quality assessments; facility enhancements; early learning provider training; and technical assistance. Recruiting, retaining, and educating the early learning workforce is vital to creating and sustaining high-quality early learning programs.
- Expand Access to Early Learning Settings for Children with Special Needs**
 Support families' ability to access appropriate early learning experiences for their children with special needs. Such efforts may include enhanced referrals matching children with appropriate placements, training and technical assistance to providers who enroll children with special needs, and/or policy approaches supporting inclusion.

10

10

EQ+IP Project Overview

- SMCOE as Lead Agency: providing services, program management and administration, and systems alignment
- Five subcontracted agencies
- Total annual budget of \$1,060,000
- Target annual service numbers
 - 132 children
 - 188 parents
 - 1,178 providers



11

Adjustments Made & Issues to Consider



SMCOE leverages substantial additional funding for EQ+IP. The amount of leveraged funding supporting EQ+IP during FY 2023-24 is \$1,385,191



Refined scope and sharpened focus of existing program components to maximize braided funding and alignment with State and local efforts



Increased emphasis on strengthening inclusive practices, infant-toddler care, parent engagement, and support for family childcare homes



Funding awards for the next cycle of First 5 California's IMPACT program will not be available until late summer or early fall of 2023. We are estimating that SMCOE will receive \$686,000 in IMPACT funding during the fiscal year

12

EQ+IP Lead Agency: SMC Office of Education

Activities & Allocations	Annual Funding	Target Service Numbers	Services to be Performed
SMCOE Personnel, Operating, & Indirects; Includes funding for services	\$530,100	Providers: 410	EQ+IP is designed to provide flexible funds that enable the SMC Early Learning sector to braid across multiple State and local funding streams, thus creating a more integrated array of services and supports. Services funded through this program complement and enhance offerings available through F5CA's IMPACT program, Quality Counts, the CA State Preschool Program, the Child Development Block Grant, childcare vouchers/Alternative Payment Program, the Big Lift, and State-funded grants focused on inclusion, dual/multi-language learners, family engagement, and workforce development.
Coaches: QI & Inclusion Support	\$65,882		
Quality Improvement Grants	\$44,000		
Vertical Change Data System	\$25,000		
Early Learning Provider Stipends	\$14,115		
Early Learning Quality Review Visits	\$12,000		
Consultants for additional PD and Translation	\$6,000		
Total	\$697,097		

13

EQ+IP Subcontractors

Agency	Annual Funding	Target Service Numbers	Services Performed
Child Care Coordinating Council (4Cs)	\$160,000	Parents: 118 Children: 35 Providers: 245	Training, coaching, and peer support for early learning providers to offer inclusive settings; enhanced referrals to childcare settings for children requiring specialized support
Family Connections	\$131,803	Parents: 50 Children: 72 Providers: 8	Wrap-around supports for low-income families: Triple P, family needs assessments, developmental screening, home visiting, care coordination, and mental health services
StarVista	\$50,000	Parents: 20 Children: 25 Providers: 45	Early Childhood Mental Health Consultation services for state-funded preschool and childcare programs unable to access these services through other funding streams
SMC Family Child Care Association	\$15,000	Providers: 220	Support for developing organizational infrastructure; resources for FCC providers
SMC Community College District	\$6,100	Providers: 250	Support for Skyline College students enrolled in the Early Learning Certificate program; focus on Inclusion Badge
Total	\$362,903	Parents: 188 Children: 132 Providers: 768	

14



Questions/Comments

15

15



RESILIENT FAMILIES FOCUS AREA

16

16



Two-year funding amount	\$185,000: July 1, 2023-June 30, 2025
Target service numbers	130 providers over two years
Services	Friday Café's
Year 1:	
<ul style="list-style-type: none"> • Administer and implement Friday Café hybrids (8 sessions) • Conversation Catalyst Coordination • Friday café San Mateo chapter website and communications • Coordinate advisory council • Sustainability planning 	
Year 2:	
<ul style="list-style-type: none"> • Transition and succession planning for community-based organization to potentially house and implement the bulk of the project. 	
Systems Improvement Strategy	Technical Assistance supports for Friday Cafe Implementation.
Program Highlights	Great Evaluation Results

San Mateo County Office of Education

Family Engagement Systems Support Project

Family engagement provider skill building, and technical assistance, including provision of Friday Cafes (a professional peer-support learning community) and systems change/support activities

17

Puente de la Costa Sur Suenos Unidos

A full spectrum bilingual parent-participatory cooperative preschool serving south coast children, parents and family members

Two-year funding amount \$200,000: July 1, 2023 -June 30, 2025	
Target service numbers	56 parents, 36 children, 6 other family members
Services	<ul style="list-style-type: none"> • Quality early learning parent Co-op with Home Visiting • Evidenced-based parent and Family engagement curriculum • Parent and child groups • Intensive supports and referrals within Puente teams re critical issues such as immigration, economic security, safety net services, advocacy, etc.) and/or linkages to external agencies
Systems Improvement Strategy	Maximize collaborations with other systems, agencies, and/or efforts within San Mateo County
Program Highlights	Anchor Institution; New facility for Co-Op in progress




18

STARVISTA

Healthy Homes and Integrated Systems for Special Needs

County-wide: Healthy Homes provide bilingual, intensive clinical mental health home visiting and related services to families experiencing multiple risk factors and complex trauma; Short-term individual and group mental health services for children and parents

One-year funding amount	\$200,000: July 1, 2023 –June 30, 2024
Target service numbers	90 children and 90 parents (Healthy Homes) 102 children,140 parents,12 providers (Special Needs)
Services	 <ul style="list-style-type: none"> • Triage, assessments, mental Health therapy and crisis intervention etc. • Mental health Home visiting • Dyadic: Parent and Child groups, Ty Y Yo • Reflective Practice consultation
Systems Improvement Strategy	Maximize collaborations with other systems, agencies, and/or efforts within San Mateo County
Program Highlights	Experience in range of supports: individual, parent-child, group, reflective practice

19

19

ISSUES TO CONSIDER



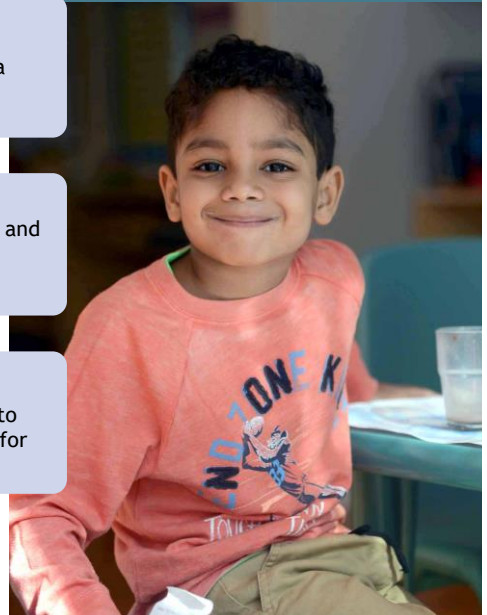
The agreement term and budget are for one-year for StarVista



The Year 2 funding approach for the strategies and activities included in this agreement are to be determined during Year 1 and may result in a new competitive process.
Any qualified contractor, including Star Vista, can apply.



Early mental health remains a priority for F5 and partners.
First 5 will conduct an early mental health landscape analysis to collaboratively address the early mental health infrastructure for SMC



20



Questions/Comments

21