



SAN MATEO
COUNTY
OFFICE OF
EDUCATION



SAN MATEO COUNTY CHAPTER Friday C.A.F.É. (Community And Family Engagement)

Karla Rodriguez, MPH

Project Specialist, TUPE Health Disparities Program
San Mateo County Office of Education

Anthony Thomas, M.S. Ed.

Manager of Youth & Family Initiatives
Peninsula Conflict Resolution Center

First 5 San Mateo County Commission Meeting
December 12, 2022





Friday CAFE (Community And Family Engagement)
transforming early learning family support systems through equitable and authentic engagement



What is Friday C.A.F.E.?

Friday C.A.F.E. is a peer support network for **Community And Family Engagement (CAFE)** professionals who support families with young children (0-5).

Our goals are to...

- Establish a professional identity for the early learning family engagement field
- Build connections through networking
- Spark innovative thinking
- Create a restorative experience



Funded by **First 5 San Mateo County** since 2016
Hosted by **San Mateo County Office of Education**
Planned with the **Friday CAFE Advisory Council**

Our 'Why' of Friday CAFE

Friday CAFE offers collective care...that's needed now more than ever.

COMPASSION

EMPATHY

**SECONDARY
TRAUMA**

**COMPASSION
FATIGUE**

As we connect with one another through compassion...

Trust develops and relationships grow...

We gradually take on the emotional reality of others....

Leading to numbing and withdrawing as well as compromised empathy... survival coping strategies!

"Friday CAFE anchors family engagement work and the practitioners in our county so that they can continue doing the heart work they do every day." ~ early learning family engagement practitioner

Who attends Friday CAFE?

Examples of participating early learning family engagement practitioners include:

- Early Learning Home Visitors
- Childcare Providers
- Family Engagement Coordinators
- Family Resource Specialist
- Community Liaisons
- Family Advocates

Examples of agencies represented include:

- Child Care Coordinating Council (4C's)
- Izzi Early Education
- Peninsula Family Service
- Family Connections
- StarVista
- San Mateo County Health
- Puente de la Costa Sur
- Early learning and childcare programs

Friday CAFE Advisory Council Members (2022-2023)

- Carolina Balladares, Family Program Manager, Family Connections
- Claudia Esteva, Leo J. Ryan Family Engagement Coordinator, Peninsula Family Service
- Cony Fuentes, Director of Community Partnerships for Una Vida, One Life Counseling Center
- Diana Hernandez-Guerrero, Father Engagement Specialist, StarVista
- Heather Ippolito, VP for Family Engagement, PTA
- Jennifer Haro, Inclusion Specialist, Child Care Coordinating Council (4Cs)
- Mariluisa Diaz, Prevention and Education Manager, Community Overcoming Relationship Abuse (CORA)
- Moana Lupe, Family and Community Engagement Coordinator, Izzi Early Education
- Lorena Alcaayaga, Supervisor, Boys and Girls Club of the Peninsula
- Michelle Redmond, Community Liaison, Redwood City School District
- Shirley Portier, Manager of Programs, Reaching and Inspiring Success through Education (RISE)
- Yolanda M Ramirez, Coordinator of Family Education and Support, Office of Consumer & Family Affairs



What is the Friday C.A.F.E. experience?

It's not a training!

- Welcoming opening ritual
- Creative process guided by a **conversation catalyst**
- Reflective prompts to stimulate authentic conversations among peers
- Optimistic closure





CAFE Conversation Catalysts craft creative experiences for authentic connections



The story that sets Friday CAFE apart - Storytelling as a catalyst for systems change

"We're actually talking about creating transformational spaces. Storytelling is just a tool. This is sacred work... we're talking about healing for transformation. If people are transformed through the process of sharing stories, workers are transformed, systems are transformed."

~ Collective Impact Forum

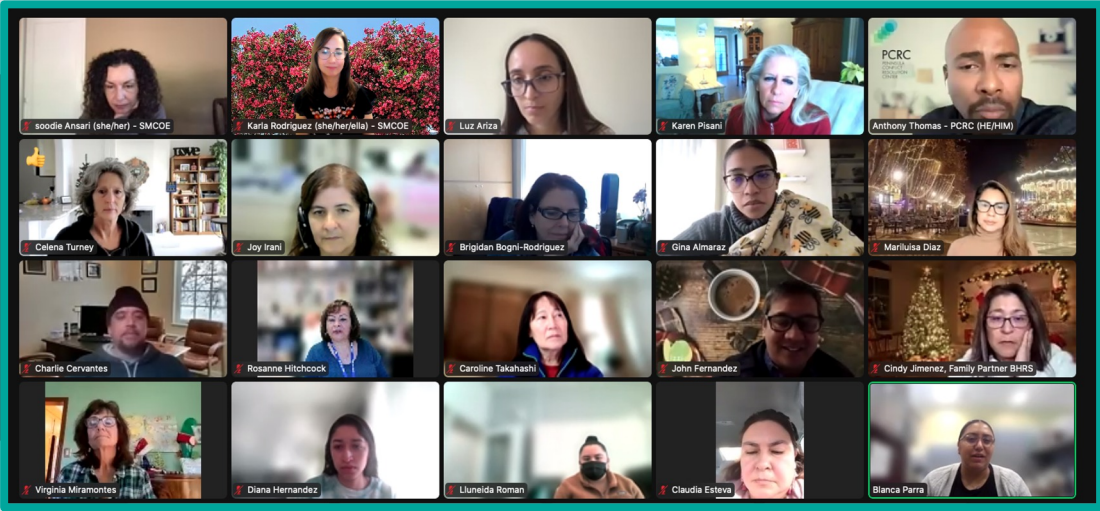
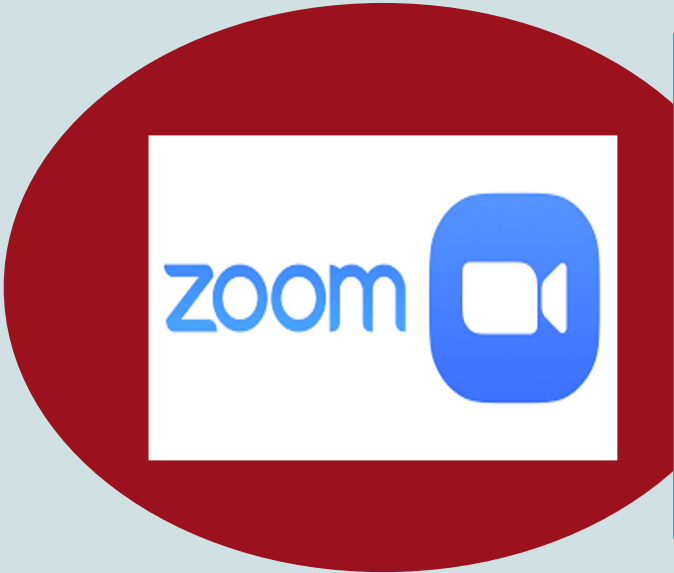




Where we
gather?



Our Current CAFE Virtual Venue



Friday CAFE: What is the impact?

YEAR	IN PERSON	VIRTUAL
2017	4	
2017-2018	9	
2018-2019	9	
2019-2020	6	3
2020-2021		8
2021-2022		8
2022-2023		8

2017-2023 = 55 Friday CAFEs

Current grant cycle (2020-2023)

- 8 annual Friday CAFEs per academic year
- Average 25 early learning family engagement practitioners attend each monthly Friday CAFE
- Average 15 early learning programs and agencies
- Average 150 unduplicated practitioners attend each year

Feedback collection tools:

- Survey after each CAFÉ
- Aug/Sept 2022: Expanded participant survey - Sixty-eight staff from 38 agencies responded to the survey
- Sept 2022: Focus group with Advisory Council

Friday CAFE: What is the impact?

“Establish a professional identity for the early learning family engagement field

“Friday CAFE is the only space for providers who work directly with families in early learning. It reminds me that the work I do is important and makes a difference.”

Build connections through networking

“I look forward every month to connect with new colleagues and friends in similar roles. We are each other’s best teachers, support-system and resources.”

Spark innovative thinking

“Friday CAFE sustains, inspires, and energizes me to keep going and try new creative strategies for building trust with families.”

Create a restorative experience

“Friday CAFE is like exercise. I often feel too busy to make time, but I never regret coming and always feel better when I do. It’s good for my mind and soul.”



Thoughts from this year's conversation catalyst...



Anthony Thomas, M.S.Ed.
Manager of Youth & Family Initiatives
[Peninsula Conflict Resolution Center](#)



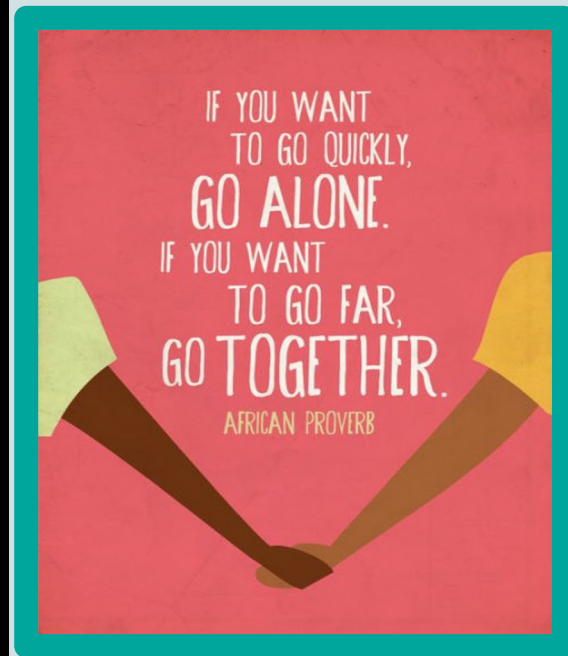
What's brewing for Friday CAFE?

- Friday CAFE evaluation 22-23
- Strategies for deepening connections with early learning family engagement practitioners in between Friday CAFEs
 - CAFE Happy Hours
 - Facebook page
 - Friday CAFE chapter webpage



Our Friday C.A.F.E. "North Star"

Shifting practice through authentic engagement and trusting partnerships.



Questions and Comments

