



Sarah Kinahan
San Mateo County Child Care Partnership Council

Presentation to
First 5 San Mateo County Commission

October 25, 2021

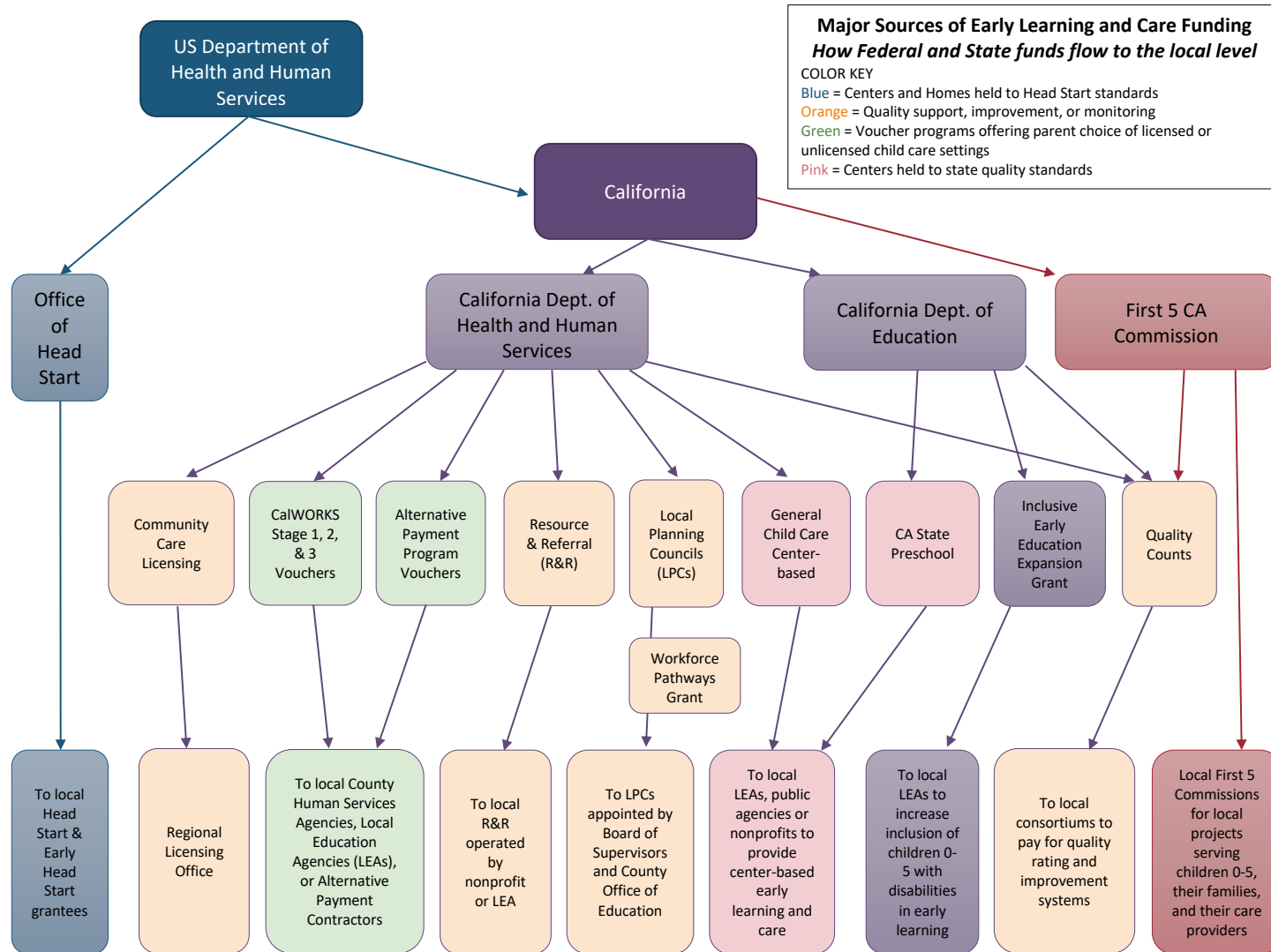


About the Child Care Partnership Council

- Local Planning Councils mandated in CA Education code for every county
- Joint responsibility of County Board of Sup's and Superintendent of Schools
- Legally a commission; Brown Act and Conflict of Interest laws apply
- Composed of parents, child care providers, public and community agencies
- **Our mission:** *The San Mateo County Child Care Partnership Council (CCPC) takes the lead in planning and advocating for quality care and early education for all children, from birth to age thirteen, in San Mateo County.*
- Our key activities:
 - Conduct a county-wide needs assessment every five years
 - Prepare a comprehensive county-wide plan for child care
 - Submit zip code priorities for the allocation of state and federal child care funds
 - Assist in the formation of collaborations to meet local child care needs



Complexity of the Child Care Ecosystem



Master Plan for Early Learning and Care

Research-Informed Solutions to Support Young Children

GOAL 1

Programs

Unify and strengthen programs and services to support children's learning and development

STRATEGIES

Infant & Toddler Care

Universal Preschool

Paid Family Leave

Equitable Treatment of Children

GOAL 2

Workforce

Support children's learning and development by enhancing educator competencies, incentivizing and funding career pathways, and implementing supportive program standards

STRATEGIES

Workforce Competency

Career Pathways

Program Standards

GOAL 3

Funding

Unify funding to advance equity and opportunity

STRATEGIES

Sliding Scale Fee

Reimbursement Rate

GOAL 4

Governance & Administration

Streamline early childhood governance and administration to improve equity

STRATEGIES

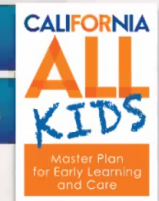
Streamlined Eligibility

Integrated Data System

Data Use

Facilities

Shared Services Networks



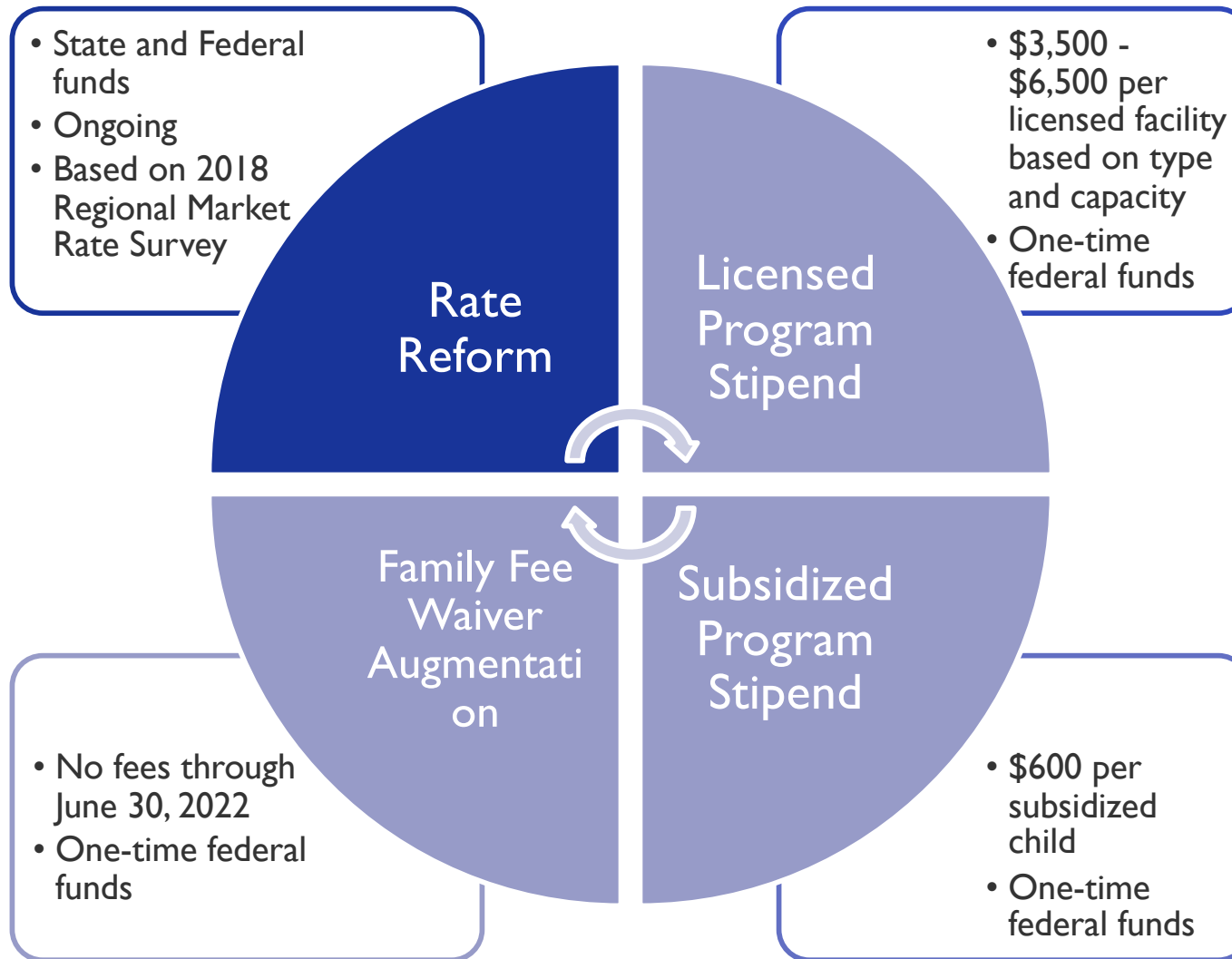
<https://californiaforallkids.chhs.ca.gov/home>



San Mateo
Child Care Partnership Council
County



New State/Federal Funding (Non-competitive)



New State/Federal Funding (Competitive)

New Spaces

- "General Child Care" for centers and networks of family child care; \$785 mill.
- "State Preschool" to wrap with TK (only LEAs are eligible); \$130 mill.

Facilities Expansion and Repair

- PreK/TK/K classroom construction for LEAs; \$490 mill.
- Community-based child care and preschool expansion; \$150 mill.
- Repair of existing community-based facilities; \$100 mill.



Universal TK/PreK

Universal TK by 2025-26 – included in state budget

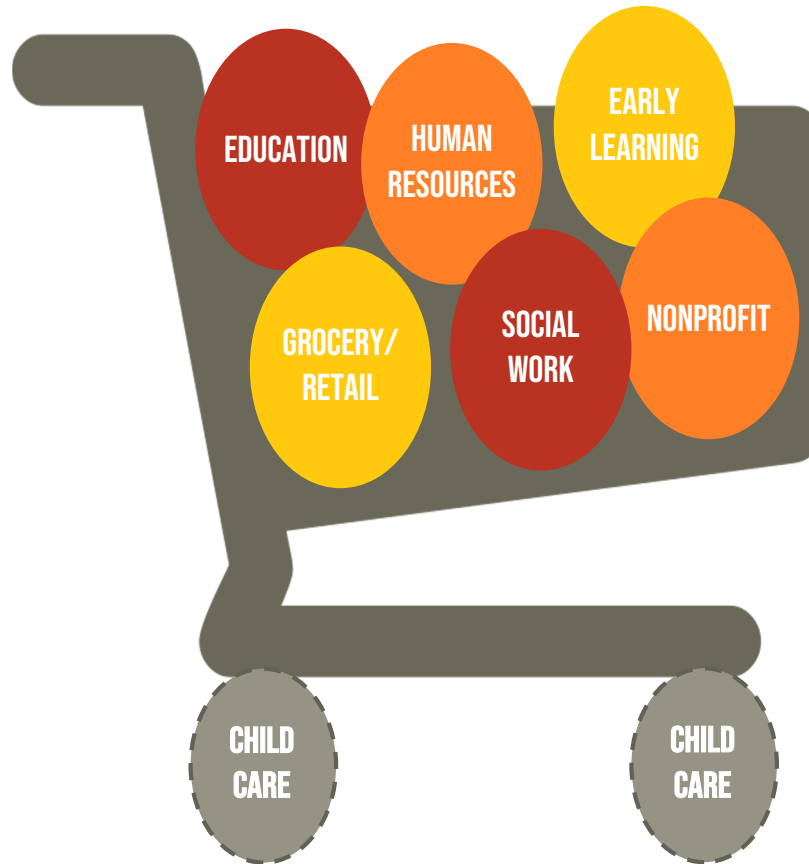
- Preserves parent choice to stay in child care, state preschool, Head Start
- Length of day aligns with School District's Kindergarten day
- Universal PreK Planning – every school district is getting funds to develop a plan for full-day learning programs for children in year before kindergarten; plan must be done by June 30, 2022
- TK wrap-around can be done in either a preschool or before/after school setting, provided by either a school district or a community-based/private program



Child Care Keeps Our Economy Moving

Especially for women, who are essential to our workforce

WOMEN
make up the vast majority of many essential industries



75% of women changed jobs as a result of breakdowns in child care *before* COVID-19.



Our Incredible Early Learning and Care Workforce

- Approximately **5,000 people** work in the early learning and care sector in San Mateo County – most are women of color!
 - Projected **need for 2,500 more by 2025** to meet demand

HÉROE DE CUIDADO INFANTIL
CHILDCARE HERO

保育界的英雄 



Impact of COVID-19 on the Early Learning and Care Sector

- Approximately **62%** of our 935 licensed programs are **open** and they are facing:
 - **Increased costs**
 - **Decreased enrollment**
- **46** programs have **permanently closed** since last March
- **45%** of providers in San Mateo County who responded to a recent survey reported that they have **1 month or less of cash on hand**
- **39%** have incurred **COVID-related debt**



How COVID-19 has impacted parent child care choices

In Silicon Valley:

- 79% of parents worry they'll have to make sacrifices in schooling or career to care for their child during the pandemic
- 72% cannot afford to pay more than \$250/week for child care
- 49%+ say cost is the largest barrier when looking for a child care provider
- 87% of parents who withdrew their child from child care did so because not comfortable with COVID exposure risk
- Very strong support for public investment in early care and education

Source: The Education Trust-West *Birth-to-Five Parent Poll*, 2021



What is next for CCPC?

- Conduct needs assessment in first half of 2022
- Make recommendations to San Mateo County for use of some ARPA funds on early learning and care sector
- Support countywide early learning and care workforce development efforts
- Disseminate information and provide technical assistance on funding opportunities to maximize the resources coming into our county
- Provide a forum to understand how state/federal funding and policy changes, along with COVID-19 recovery, are impacting all components of the early learning and care ecosystem
- Advocate for legislation in 2022 that supports our Public Policy Platform



Learn more...

- Attend a CCPC meeting – next meeting is November 15 from 10:30-12
- Visit our website - www.smcoe.org/about/child-care-partnership-council/
- Contact Sarah at skinahan@smcoe.org or 650-802-5647 to learn more or to get on CCPC's email list

