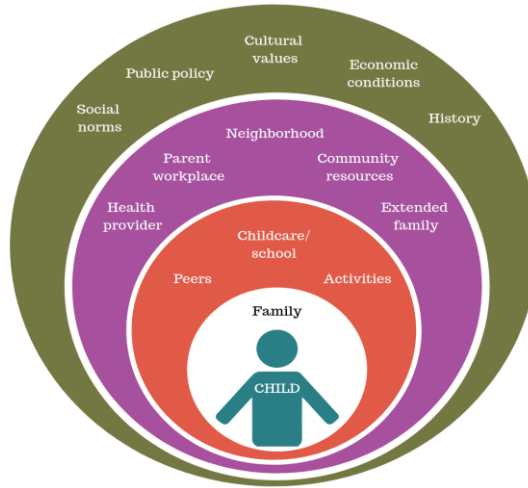




PREPARING CHILDREN FOR LIFELONG SUCCESS

Ecological Theory & The Social Determinants of Health



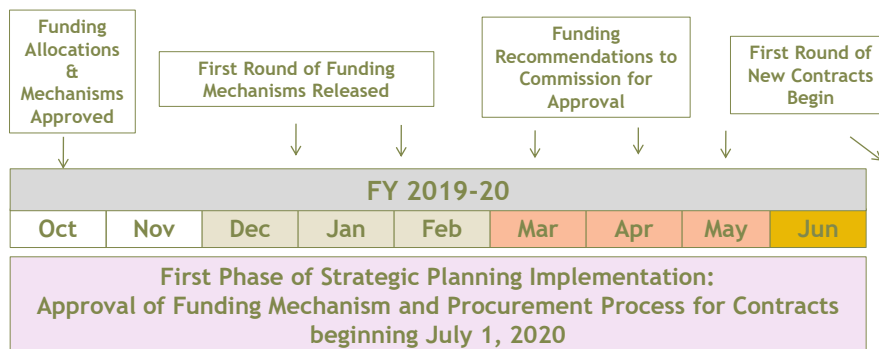
Considerations for 2020 - 2025 Strategic Plan

1. The contextual landscape at the local, state, and federal level
2. Investment across Focus Areas and Strategies
3. Needs Assessment and Evaluation Data
4. Sustainability
5. Relationship between systems-level interventions and direct services
6. Seeding innovative/emerging efforts
7. What is the highest value-add that F5SMC (and/or partners) can bring to 0 - 5 systems and services



3

Strategic Plan Implementation Plan (SPIP) Timeline



Funding Mechanisms

- ❑ Request for Application (RFA)
- ❑ Request for Proposal (RFP)
- ❑ Request for Qualifications (RFQ)
- ❑ Intent to Negotiate/Partner (ITN)
- ❑ Sole Source



5

Resilient Families Allocations : \$3,180,000 total over 3 years

Strategies	FY 20-21	FY 21-22	FY 22-23	Funding Mechanism	Contract Date
Intensive Support for Families with Multiple Risk Factors	\$636,000	\$636,000	\$636,000	RFP- Released January 7, 2020 Commission Recommendation and Approval March 23, 2020	July 1, 2020
Parent Connectivity	\$212,000	\$212,000	\$212,000		July 1, 2020
Family Engagement Capacity Building	\$212,000	\$212,000	\$212,000		July 1, 2020
TOTAL	\$1,060,000	\$1,060,000	\$1,060,000		

Healthy Children Allocations: \$3,180,000 total over 3 years

Strategies	Sub-Strategies	FY 20-21	FY 21-22	FY 22-23	Funding Mechanism	Contract Date
Oral Health Access & Utilization	Services and Systems	\$125,000	\$125,000	\$125,000	Sole Source & or Bid	July 1, 2020
Integrated Systems for Children w/ Special Needs and Their Families	Watch Me Grow/ Help Me Grow Continuum	\$860,000	\$860,000	\$860,000	RFQ, Sole Source, ITN Release Feb, March Commission Recommendation, Approval April	July 1, 2020
Early Mental Health Systems and Infrastructure Enhancements	Trauma Initiative	\$75,000	\$75,000	\$75,000	RFQ	July 1, 2020
TOTAL		\$1,060,000	\$1,060,000	\$1,060,000		

Quality Care and Education Allocations: \$3,180,000 total over 3 years

Strategies	Sub-Strategies	FY 20-21	FY 21-22	FY 22-23	Funding Mechanism	Contract Date
Quality Improvement		\$900,000	\$900,000	\$900,000	RFQ, Sole Source, ITN Feb, March April Commission Recommendation & Approval May	July 1, 2020
Expanded Access to Early Learning Settings for Children with Special Needs	Enhanced Referrals/ Coaching	\$135,000	\$135,000	\$135,000		July 1, 2020
	Professional Learning Community/ Peer to Peer Support	\$25,000	\$25,000	\$25,000		July 1, 2020
TOTAL		\$1,060,000	\$1,060,000	\$1,060,000		

Partnerships Advocacy Communications and Evaluation \$1,800,000 total over 3 years

Strategies	Sub-Strategies	FY 20-21	FY 21-22	FY 22-23	Funding Mechanism	Contract Date
Community Education	Communications Plan Implementation	Up to \$300,000			RFQ Release March Commission Recommendation Approval May	July 1, 2020
<ul style="list-style-type: none"> • Research & Evaluation • Grants Management & Data Base • Kit For new Parents • Articulation, Alignment, 0-3/School Readiness • Emerging Projects • Cross Sector Partnerships • Capacity Building/Professional Development • Policy and Systems 						

Commission Approval

- Review Panel Recommendation on proposed project
- Presentation on project: Summary, Scope of Work, Budget
- Approval of Recommendation
- Authorization of contract negotiations and contract execution





Potential SPIP18-20 Carry-Over Funds to FY 20-23

Mental Health Systems; Safe Health & Equitable Communities;
Infant Toddler Access; Research and Evaluation; Social Service Collaboration

11



NEXT STEPS

- ☐ SPIP Implementation
- ☐ Continued release of procurement process'
- ☐ Periodic Commission and subcommittee updates and approvals
- ☐ Partnership Advocacy Communications and Evaluation



Questions/Comments

13

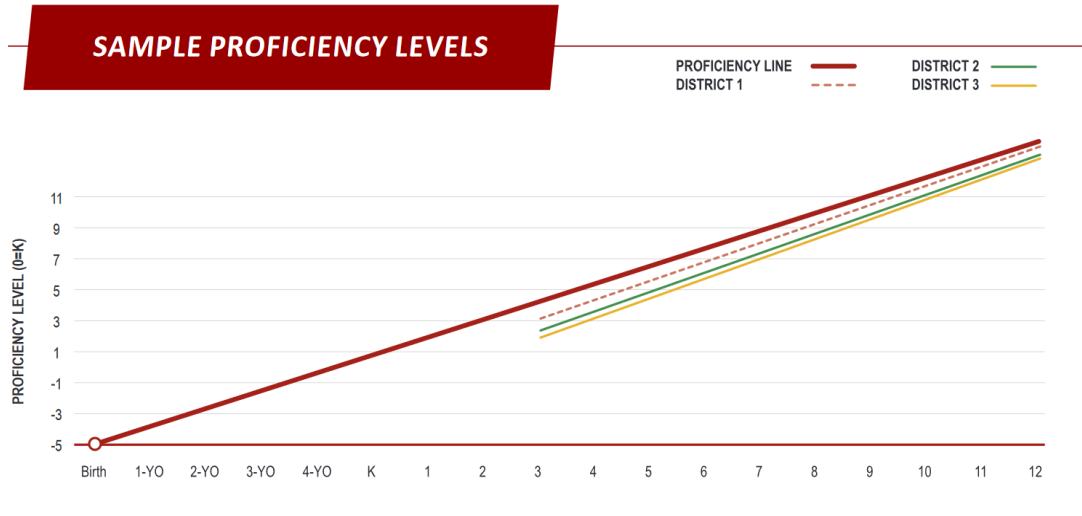


Our Challenge

Only 58.5% of our county's children are reading proficiently by 3rd grade.

- Only 31% for economically disadvantaged third graders

Why This Matters



“If we want to sustain the effects of preschool, we need to look at what happens *after* children enter school...instruction has to be more than good to sustain preschool effects; it has to build strategically on the gains”

Stipek, 2017

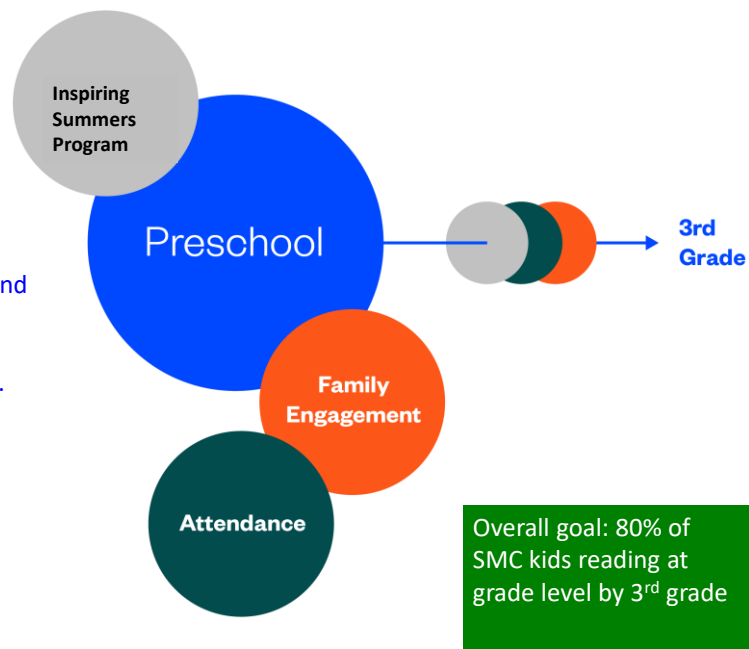


Helping our children read proficiently by 3rd grade is the most powerful thing we can do to change their academic trajectory.



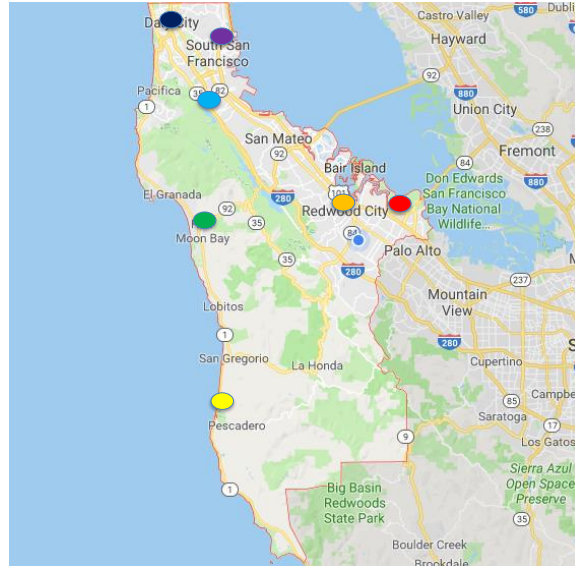
The Big Lift

Combines high-quality and connected learning experiences from preschool to third grade.



The Big Lift Communities:

- South San Francisco
- Daly City
- San Bruno Park
- Half Moon Bay
- La Honda-Pescadero
- Redwood City
- East Palo Alto-Belle Haven



Quality Preschool

Who

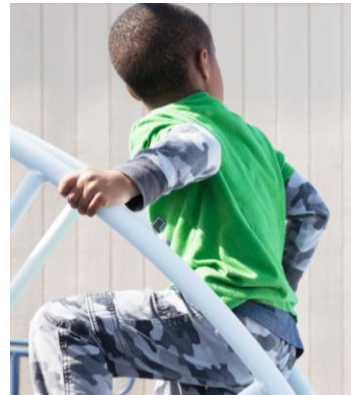
- 37 sites.....99 classroom sessions
- 2,000 very low-income children annually
- 11 preschool agencies
- Both nonprofit and school district operated

What

- Independent ratings of quality on 7 elements
- Quality Improvement Plans

How

- Intensive, monthly, site-based coaching
- Cohorts of learning communities
- Regular leadership meetings & data review



✓ Inspiring Summers – K-3

Mornings: BELL-powered, evidence-based literacy program

- Local teachers are trained by districts using BELL's "train-the-trainer" model
- Builds local capacity, increases professional development

Afternoons: San Mateo County Libraries STEAM enrichment

- Hires a diverse group of college-aged students
- Includes hands-on art & science experiences, yoga and mindfulness, and field trips



Family Engagement

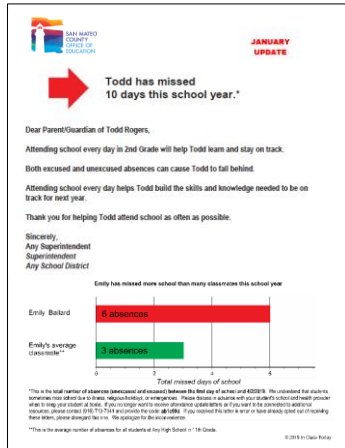


Play to Grow
Positive parenting series
adapted from The Incredible
Years



Attendance: - PreK - 2

EveryDay Labs Addresses Critical Parent Misconceptions

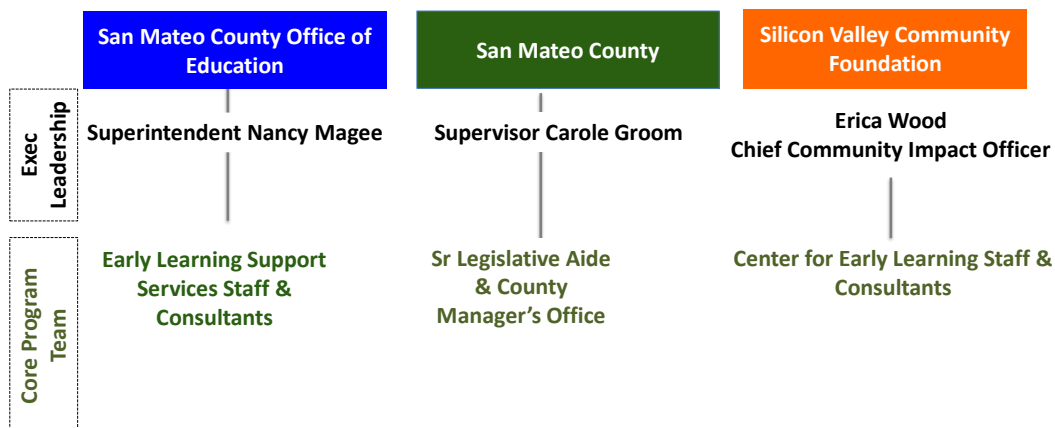


1. Underestimate their child's absences by 50%
2. Believe their child is absent less or the same amount as other students
3. Believe missing a few days of school a month is not problematic

Sources:
Rogers & Feller (2018). Nature Human Behaviour
Robinson, Lee, Dearing & Rogers (2018). American Educational Research Journal

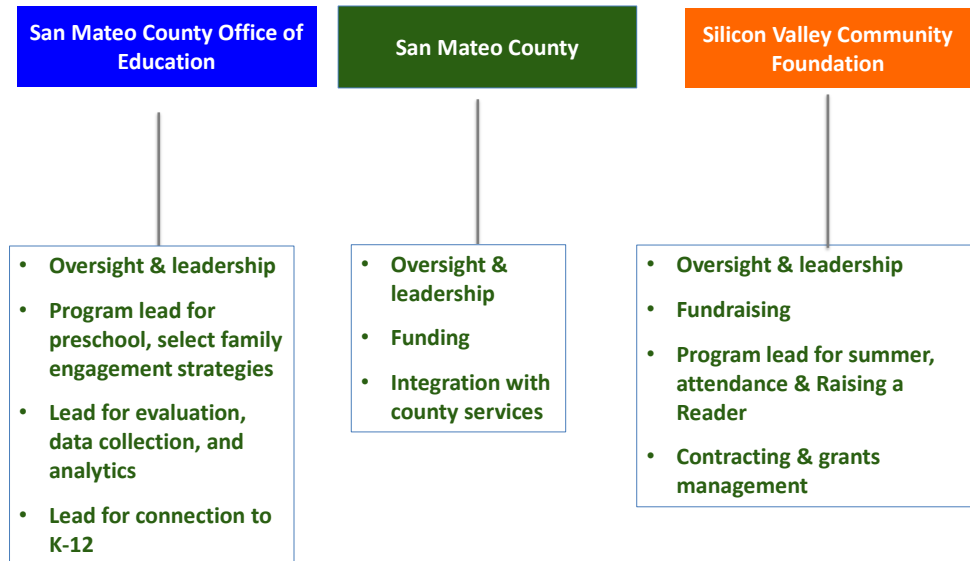


Collective Impact: County Leadership



Additional county level partners include: San Mateo County Libraries, BellExel

Roles of Lead Agencies

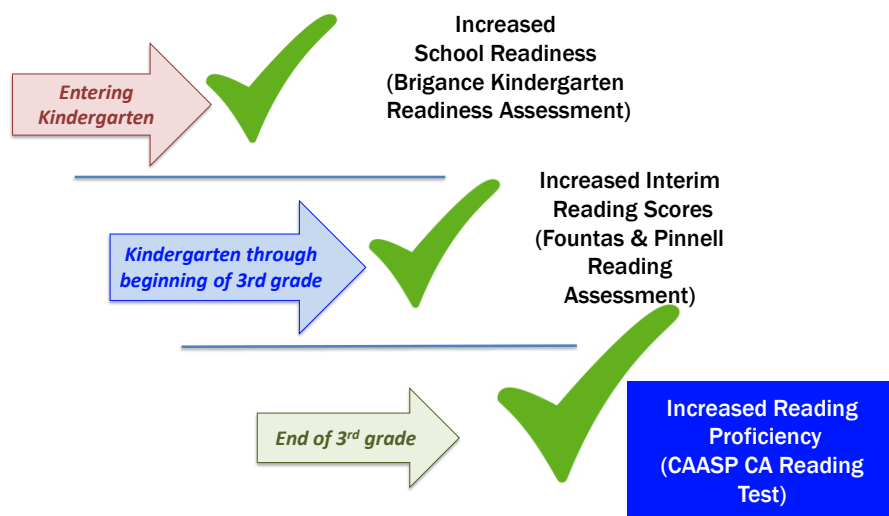


Funding Partners

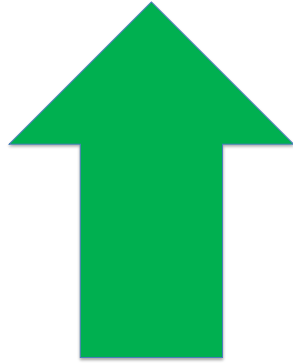




Key Long-Term School Readiness and Reading Outcomes



Big Lift kids



22%

more likely to be ready for K

4 or more

more reading at home

3.5 months

reading "gain" over summer

7500

more days in school



17

Community Collaboratives: Local Success

- Capacity
- Trust
- Connections



Momentum & Change

What's on the horizon?



Page 19

- 3rd Grade reading tests
- Summer – 3rd grade expansion
- Focus on Instructional Quality & Supports
- Sustainability



Lift with us
www.thebiglift.org